



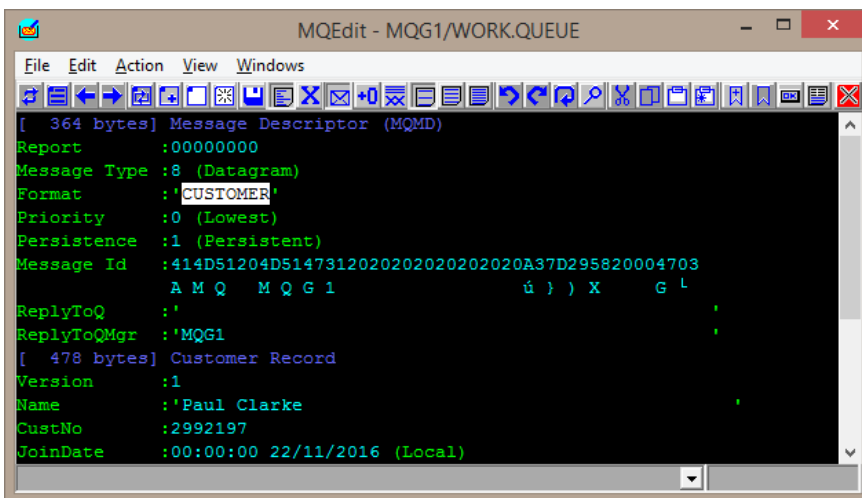
## Live Parsing Editor for IBM MQ Messages

MQEdit is a graphical live parsing editor for IBM® MQ Messages.

Have you ever had a poison message, badly formed, and problematic? Want to just edit that one byte that caused all the problems, or correct the format with just a little tweak and then send it on its way? Well now you can.

*“You really want to take a look at the gem of a tool (pun intended!) that is MQEdit from MQGem. If it is for looking at the contents, attributes and properties of the messages in the queue, IMHO there isn't any better.”*

Use MQEdit to correct messages; or create new messages for use when developing new applications, or testing them out.



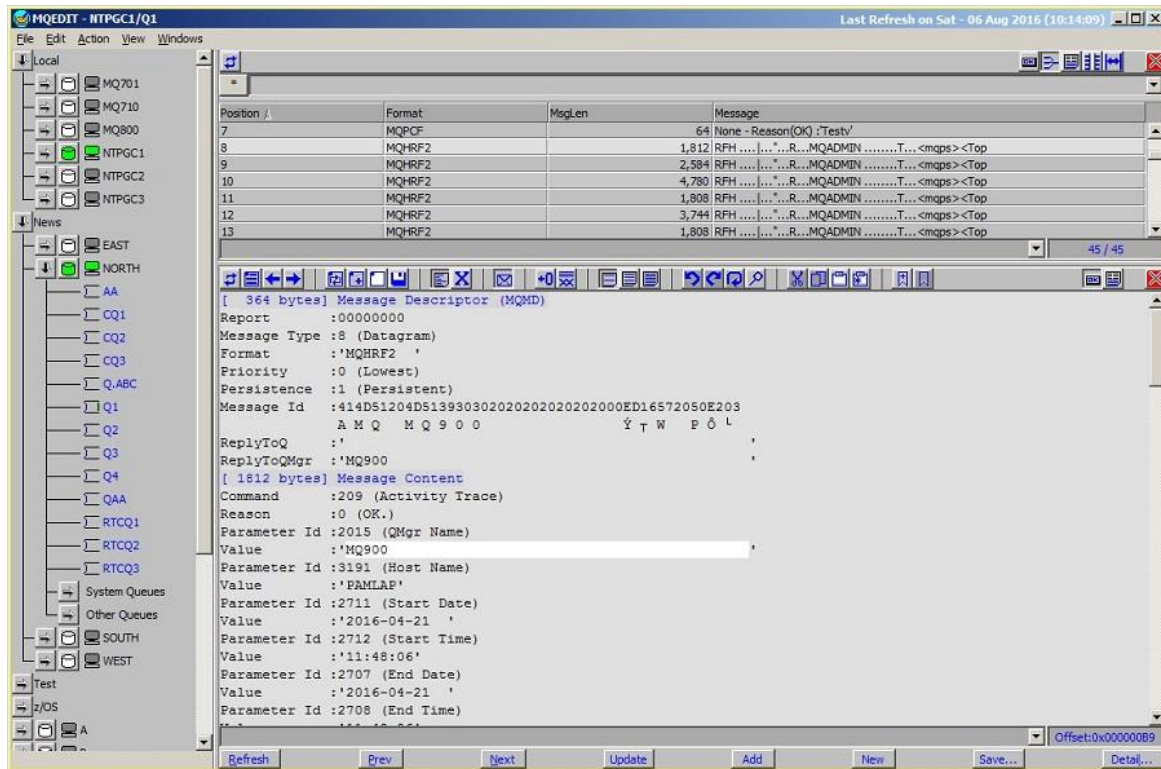
Ensure your messages stay correctly formatted as you edit them. MQEdit parses them as you edit, informing you of any discrepancies. It also calculates the lengths of structural sections as you type, to save you adding it up yourself, and allows you to insert headers and structure parts, maintaining the integrity of linked structures.

You can edit all parts of the message, the Message Descriptor (MQMD), any headers the message might have, including XML data in an MQRFH2, and of course the message body itself. View or edit the message in hex mode or in formatted mode to make any corrections needed to your message. Built-in formatting is included for messages in XML, JSON, FIX, CSV and Edifact formats.

Define your user formats to MQEdit to allow it to parse and display your user messages for easy editing. User formats can be created based on the Format in the Message Descriptor, or simply based on the queue name. Even if all your messages are simple string messages, user formats can still make your life much easier.

## Highlights

- Full live parsing and display of message content
- Edit message body
- Edit message descriptor
- Edit in formatted or in hex
- Built-in formatting for XML, JSON, FIX, CSV and Edifact formats
- Define user formats to MQEdit to allow parsing, display and easy editing of your user messages
- Drag & drop to Move or Copy
- 3 message detail levels
- Editing supported in a wide range of ASCII and EBCDIC codepages
- Direct editing of big-endian and little-endian messages
- Structure integrity maintained as you edit
- Direct editing of PCF structures, let MQEdit do all the hard work
- Add and Remove message parts, such as PCF structures effortlessly
- Display hex in predictive text
- Find and Replace capability
- Full Undo/Redo support
- Full copy/paste support
- Fully configurable colours/fonts
- Bookmark and restore position
- Message list auto-refresh and export



Manipulate messages on your queues by moving or copying messages easily using a simple drag and drop of your mouse. This can be between queues on the same queue manager, or across two different queue managers.

MQEdit has a full search and replace capability allowing you to find and change multiple instances of strings in any codepage within your message. You can also copy and paste data into your message, either from applications outside MQEdit, or from another message displayed by MQEdit itself.

During an edit of a message, if you make an error, you can simply undo the change. MQEdit keeps a full undo/redo record of your changes until you finish editing the message.

If you are editing a long message, you may find it helpful to use the bookmark facility to store a place in the message that you need to come back to – saves on lots of scrolling later.

MQEdit runs on Windows® or Intel® Linux® but can connect to, and manipulate messages on, both distributed and z/OS® platforms, for all versions of IBM MQ which are in support.

## For more information

To learn more about how MQEdit – the Live Parsing Editor for IBM MQ Messages, can help you manage

your messages and queues, contact us by email on support@mqgem.com, or visit:

[www.mqgem.com/mqedit.html](http://www.mqgem.com/mqedit.html)

Try it out for free with a no-obligation, one month trial licence. Email support@mqgem.com for yours.



© Copyright MQGem Software Ltd 2016, 2017

Email support@mqgem.com  
 Web www.mqgem.com  
 Blog mqgem.wordpress.com  
 Twitter @MQGem

IBM and z/OS are trademarks of International Business Machines Corporation in the United States, other countries or both.

Windows is a trademark of Microsoft Corporation in the United States, other countries, or both.

Intel is a trademark of Intel Corporation or its subsidiaries in the U.S. and/or other countries.

The registered trademark Linux is used pursuant to a sublicense from the Linux Foundation, the exclusive licensee of Linus Torvalds, owner of the mark on a world-wide basis.

Other company, product and service names may be trademarks or service marks of others.